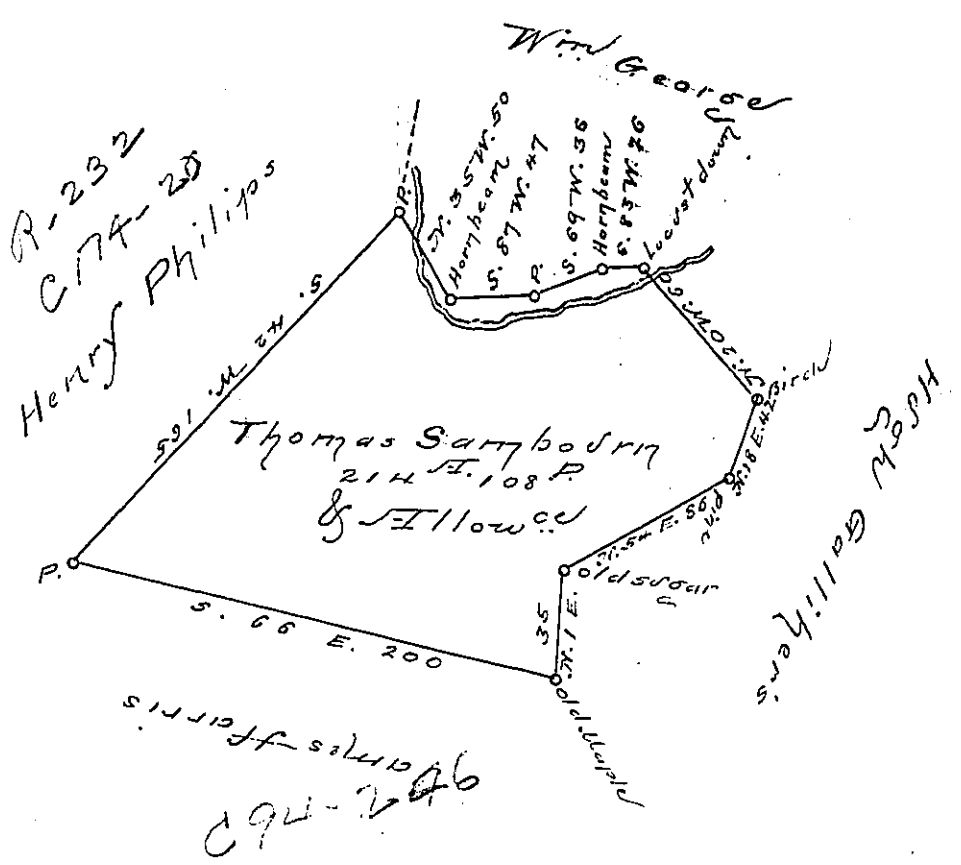


C.	D.	N.	S.	E.	W.
S. 56 E.	200		81.34	182.70	
N. 54 E.	85	34.77		0.61	
N. 18 E.	42	50.55		49.58	
N. 20 W.	60	39.94		12.93	20.52
S. 83 W.	26		3.17		25.81
S. 69 W.	36		12.90		33.61
S. 87 W.	47		2.46		46.94
N. 35 W.	50	40.76			28.68
S. 42 W.	165		122.6		110.41
			222.48	265.87	265.77



Situated on Clearfield Creek Alleghany
 township Cambria County.
 Surveyed the 16th of Aug. 1797 on a warrant
 granted the 27th March 1797 & resurveyed the
 14th of Sept. 1820 on an order of the board of
 property dated Sept. 7th 1810.

Jacob Spangler Esq. } Wm. Chaffee, Sec.
 Surveyor General }

IN TESTIMONY that the above is a copy of the original remaining on file in the
 Department of Internal Affairs of Pennsylvania, made con-
 formably to an Act of Assembly approved the 16th day of
 February, 1833. I have hereunto set my Hand and caused
 the Seal of said Department to be affixed at Harrisburg, this

— fifth — day of — May — 1896.

James W. Latta
 Secretary of Internal Affairs.